

ECG RE-ENTRY PLAN

[Return to In-Person Learning](#) | [Updates](#) | [Protocols](#)

Transitioning to in-person learning

Coming back to in-person learning will be an adjustment. Here is a helpful resource to assist your child in getting ready to be in school again.

[Coming back to school](#)

Practicing a Good Mind at Home

We will practice a good mind daily together. **Parents will screen their child each day before they leave the house.** Please post the screening questions on your fridge or front door so you don't forget! Staff have to self-screen each day as well.



Welcome back!

We have missed seeing our students in person and are looking forward to being together again, safely. This document outlines some of the specific details about what the school day will be like when we are back together for in-person learning.

Practicing a Good Mind

- ✦ All staff and students do a self-screening BEFORE entering the building each day.
- ✦ All staff and students entering the building must wear masks (teachers will also wear face shields) and have them on throughout the day.
- ✦ All staff and students will sanitize their hands regularly.
- ✦ All staff and students will maintain a distance of 2 meters while in the building.





Bussing, drop-offs and pick-ups

BUSSING:

Students will be safe by:

- wearing a mask at all times while on the bus
- sitting in assigned seats with their family members, distanced from others
- Loading back to front and offloading in opposite order so no one enters into the space of another
- exiting the bus and going directly into the school to their classroom through assigned doors

DROP OFFS:

Families are asked to keep students safe by:

- driving into the parking lot loop and waiting for staff there to indicate they can unload
- being patient while busses unload and clear the area before unloading their children.

PICK UPS:

Students will be safe by:

- waiting in the classroom until busses have loaded before collecting materials from the cubby
- waiting for busses to leave before exiting the building (**no early pick-ups**)

Arriving for the day

When students enter the building they will:

- enter their assigned door (KG at the north door, G1-3 in the front door, G4-8 in the south door)
- walk directly to their classroom cubby
- apply hand sanitizer on entry to the classroom (using dispensers)

Throughout the Day

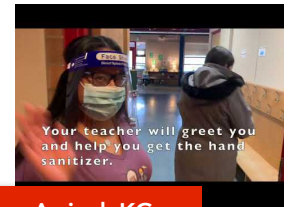
In order to maintain health and safety standards, students will:

- staff and students will follow all the arrow signs and stay to the right while in the hallway
- students will not travel to other classrooms but will remain in their own cohort throughout the day
- students can use the water dispensers but must have a refillable water bottle and use hand sanitizer
- classrooms are equipped with plastic dividers to keep students in their own area. Masks are only removed when eating lunch

Recess and Outdoor Play

In order to play safely, students will:

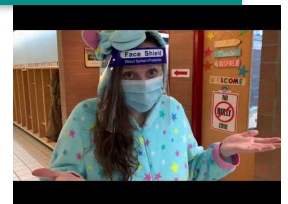
- stay in their recess zones during breaks to minimize cross-grade contact
- keep masks on throughout the recess so they can interact outside their own cohort
- wait for their teacher to let them in through their doorway and enter the building while distancing



Arrival: KG



Arrival: Gr.1-3



Arrival: Gr.4-8

